

FOR SALES

thescraphub.com

Jingcheng QY55H3 Truck Crane (55Ton; YOM 2013)

Key Specification

Manufacturer: Jingcheng Heavy Industries
Type: Truck Crane, Mobile Crane
Chassis: 4 Axles (Truck Chassis)
Condition: Used - Ready for work
(Regular Greased and Serviced)



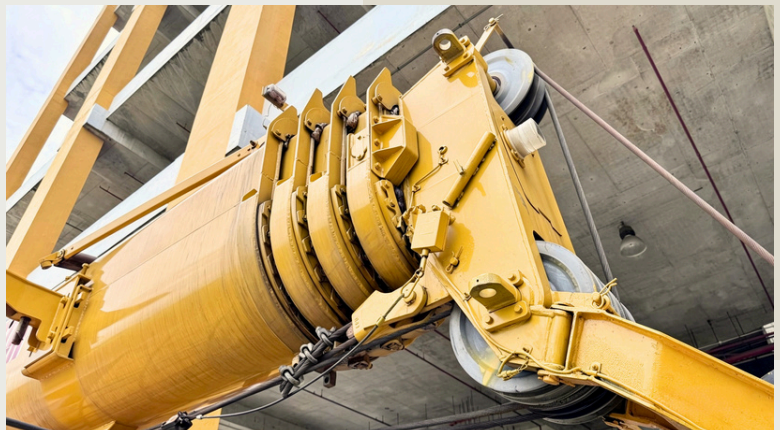
Robust and Cost Effective

Known for its mechanical simplicity and durable chassis. JC Crane is ideal for heavy lifting tasks where reliability and ease of repair are priorities.

Excellent ROI (Cost Effective)

Heavy-Duty Boom

The multi-section telescopic boom is built with high-grade reinforced steel. The boom head (as seen in photo) is well maintained, with sheaves and wire rope guides in excellent working order.



FOR SALES

thescraphub.com

Jingcheng QY55H3 Truck Crane (55Ton; YOM 2013)

Clean Hydraulics

Inspection of the lower manifold and hydraulic routing (see technical photos) confirms a well-sealed system with no major leaks, ensuring consistent pressure during lifts.



Practical Workspace

The operator's cabin is designed for functionality, featuring an intuitive control layout that minimises the learning curve for new operators.

Rugged Undercarriage

Features a reinforced suspension system and a heavy-duty drivetrain designed to handle the weight of the upper structure with ease on various road conditions.

