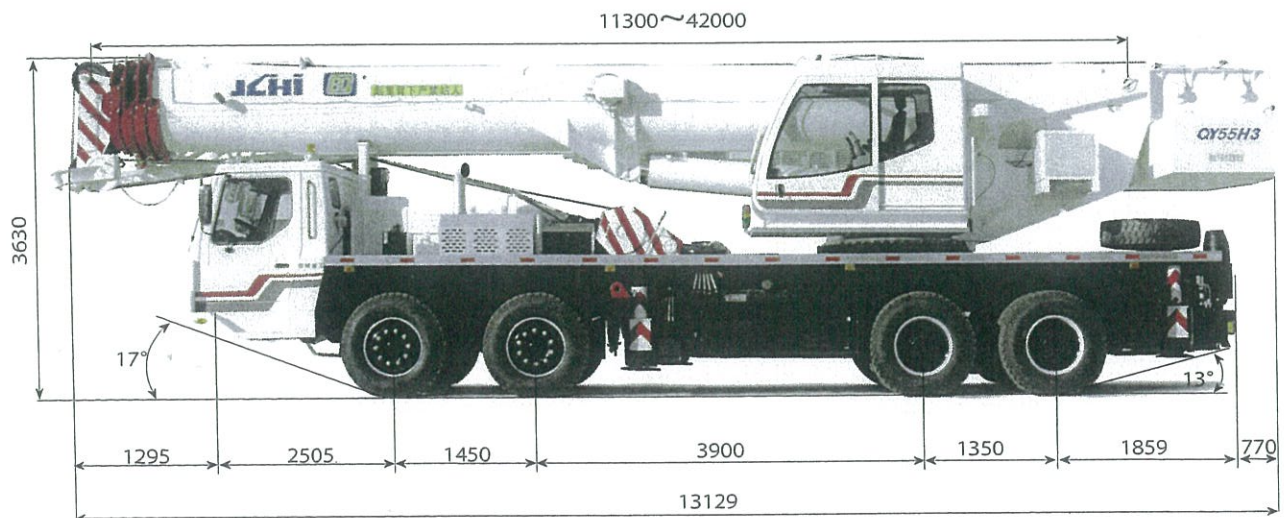


Specifications

Max. rated capacity	55000 kg	Outriggers	Four H-type hydraulically controlled outriggers; independent horizontal and vertical movement controlled from each side of carrier and the superstructure cab. Each outrigger is equipped with hydraulically controlled check valve. Electronic crane level indicators. Horizontal.....6800mm Longitudinal.....4600mm
Max. traveling speed	60 km/h	Outriggers footprints	
Gradeability	35 %	Chassis manufacturer	JCHI
G.V.W. Front axle load Rear axle load	41430 kg 15580 kg 25850 kg	Chassis model	BCW5421JQZ(Overall width cab 8x4)
Min. turning radius	11m	Engine	
Main boom Section Length fully retracted Length fully extended Telescoping speed Elevation speed	Five-section U 11.3 m 42 m Telescoping 30.7m in 120 Seconds -2- to 81-/70 s	Model Type Displacement Rated power Max. torque	ISLe4340 6 cylinder in line, common rail 8900CC (Euro IV) 250kW/2100rpm 1500N·m/1200-1400rpm
Jib Length	Two sections articulating jib, equipped with a one - way pulley at boom end 9.5m and 16m	Gearbox	P.T.O in the fourth gear, 9 speeds forward, 1 reverse
Hoisting system	Variable speed hoist with double grooved drum and anti-swing wire rope; Variable-displacement motor, proportionally control the speed of the hoist; Main hoist is equipped with built-in normally closed brake and balance valve	Slewing system	1.5r/min (Free slewing)
Line pull Line speed Wire rope	42.20kN(4300kg) 135m/min at the fourth layer Diameter.....18mm Length.....230m	Hydraulic system	
		Hydraulic pump Control valve Hydraulic oil tank Oil filter	Triple gear pump driven by engine through P.T.O Multiple control valves actuated by pilot pressure with integral pressure relief valve 700 L Return oil filter
		Safety devices	<ul style="list-style-type: none"> • Relief valve • Hydraulic lock • Working range and load indicator • Overwinding auto control alarm • Counter balance valve • Load indicator • Height limiter • Overwinding overweight control alarm

Dimensions

Unit: mm



Width: 2800

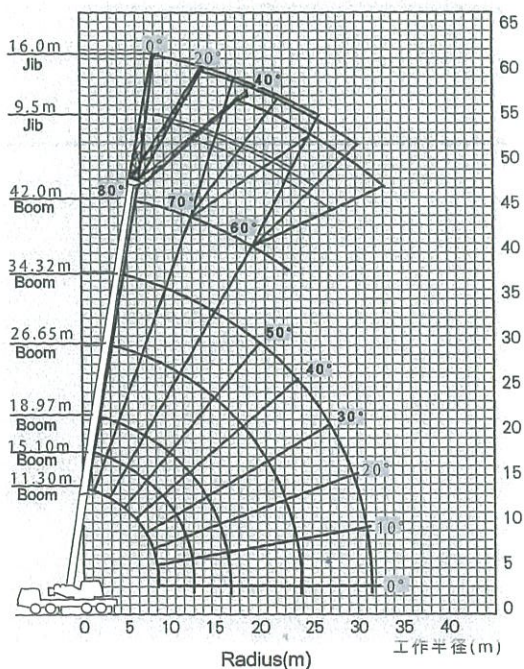
Lifting capacities

Unit: kg

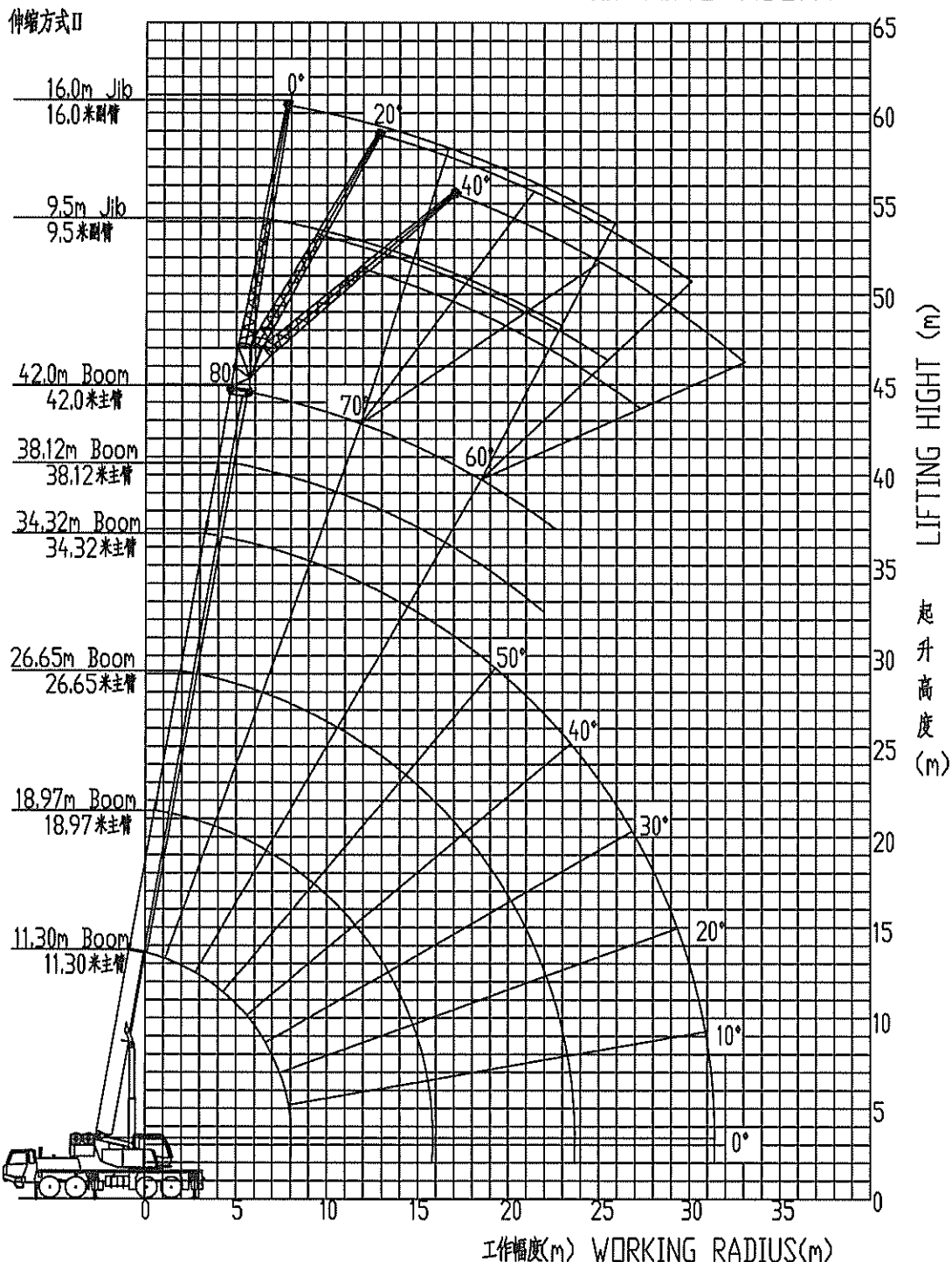
Outriggers fully extended 6.8m										
Radius(m)	11.3m	15.1m	18.97m		26.65m		34.32m		38.12m	42.00m
3	55000	40000	28000	20000						
3.5	50000	40000	28000	20000						
4	43000	38100	28000	20000						
4.5	40000	33800	28000	19800	20000	14000				
5	36000	30400	28000	19000	20000	14000				
5.5	31000	27400	27200	18200	20000	13600				
6	26000	25000	24700	17500	20000	12800	14000	8000		
6.5	24000	22800	22500	16800	18900	12000	14000	8000		
7	22000	21000	20700	16200	17800	11400	13500	8000	8000	8000
8		17900	17100	15200	15800	10200	12500	8000	8000	8000
9		14600	14200	14300	14200	9300	11300	7600	8000	8000
10		11600	11300	13500	12500	8500	10400	7000	7500	8000
11		9500	9100	11400	10300	7800	9600	6400	6900	7500
12		7800	7500	9600	8600	7200	8800	5800	6400	6900
14			5100	7200	6200	6200	6800	4900	5500	5900
16			3500	5500	4500	5400	5100	4200	4700	5200
18					3300	4700	3900	3600	4100	4200
20					2400	3700	3000	3200	3600	3200
22					1700	3000	2200	2800	2800	2500
24					1200	2400	1600	2500	2200	1900
26							1200	2100	1800	1400
28							800	1700	1400	1000
30							500	1400	1000	700
32								1100	700	450

Remarks:

1. The load chart is referring to rated lifting capacities when the crane is set on the firm ground horizontally.
2. Rated lifting capacities based on stability comply with GB/T6068-2008.
3. The weight of hook blocks and hooks are included in actual lifting capacities. (55t hook weight:620kg; 4t hook weighted 130kg)



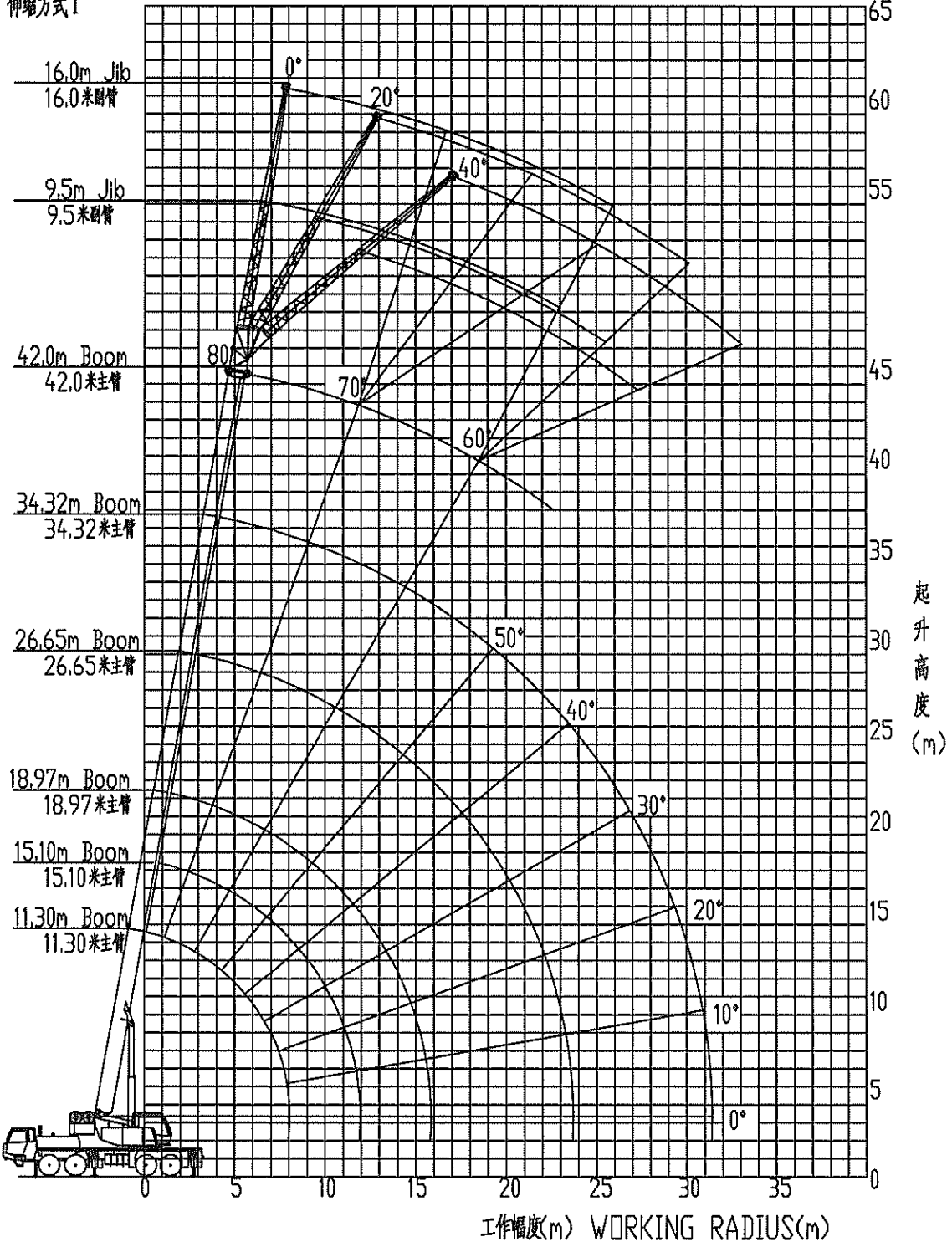
QY55H3 工作幅度与起升高度 WORKING RADIUS & LIFTING HEIGHT



注: 未考虑吊臂的弯曲影响 NOTE: Effect by boom bend, not shown herein

QY55H3 工作幅度与起升高度 WORKING RADIUS & LIFTING HEIGHT

伸缩方式 I



注: 未考虑吊臂的弯曲影响 NOTE: Effect by boom bend, not shown herein